



## Princes Gardens, Sheffield, S2

£1,095 PCM

Welcome to Simple Life's Prince's Gardens. Prince's Gardens is situated only 2.5 miles away from Sheffield city centre. 0.25 miles away, there is a regular tram and bus service from Manor Top to Sheffield, with one or the other leaving every 5 minutes. The A57 is just over a mile away, giving easy access to the M1.

With a large living room spanning the back of the property, beautiful French windows opening on to your own private garden and an open plan kitchen/dining area, the Maple offers a friendly environment for entertaining and family time.

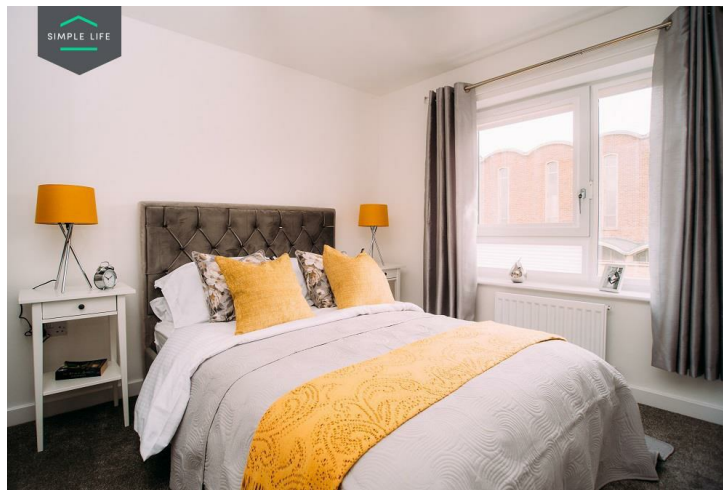
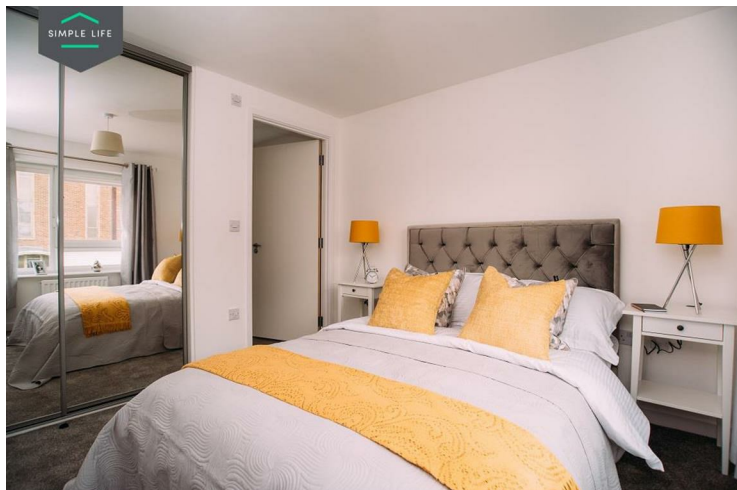
Upstairs the Maple has a large double bedroom and single bedroom, as well as a wonderful Master ensuite complete with shower. The family bathroom is along the landing with a shower over the bath for convenience.

The site is close to Manor Top, a local shopping and amenity centre and there's also a ready supply of good primary schools and nurseries nearby including St Theresa's Catholic Primary School directly nextdoor to the development and Prince Edwards also within very close proximity of the site.

A flower-filled park, situated at the back of the site, is a beautiful feature of this development. Along with the leafy, tree-lined streets, this development will boast a very picturesque setting.

Deposit: £1550  
Council tax: A  
Unfurnished  
Available 10th April 2025





## Key Features

- Car Parking Space
- Dishwasher
- Washing/drying machine
- Carpets up the stairs and in the bedrooms
- Blinds in the bedrooms
- Security Alarm
- Fridge-freezer
- Modern kitchen worktops and units
- Private back garden

## Location

